



**IntelliCulture**  
Putting Farmers First

REPORT PREPARED FOR  

---

**SAMPLE FARM**

[contact@intelliculture.ca](mailto:contact@intelliculture.ca)  
[www.intelliculture.ca](http://www.intelliculture.ca)

A large, dark, semi-transparent photograph of a tractor in a field, serving as a background for the report title. The tractor is red and white, and a person is visible in the driver's seat. The background shows a cloudy sky and a field.

# INTELLICULTURE COVERAGE REPORT

REPORTING PERIOD

**2020**

March 15 – March 21

# Vehicle Usage Summary



Vehicle	In Field Time	Field Acreage	Acres/Hour	Out of Field Time
JD #05	0 h 25 min	1.8 ac	4.3 ac/hr	0 h 43 min
JD #28	0 h 16 min	1.1 ac	4.1 ac/hr	2 h 7 min
JD #04	0 h 22 min	1.2 ac	3.3 ac/hr	1 h 13 min
JD #29	9 h 41 min	30.9 ac	3.2 ac/hr	7 h 22 min
JD #30	4 h 48 min	13.9 ac	2.9 ac/hr	8 h 1 min
JD #13	1 h 51 min	5.4 ac	2.9 ac/hr	3 h 20 min
JD #14	4 h 53 min	12.1 ac	2.5 ac/hr	3 h 33 min
JD #10	3 h 22 min	6.7 ac	2.0 ac/hr	7 h 9 min
JD #16	1 h 31 min	2.8 ac	1.8 ac/hr	1 h 34 min
JD #02	1 h 47 min	2.4 ac	1.3 ac/hr	1 h 54 min
ATV #02	2 h 49 min	6 ac	2.1 ac/hr	3 h 12 min
KRTV #04	7 h 12 min	27.8 ac	3.9 ac/hr	4 h 35 min
KRTV #01	5 h 50 min	21.6 ac	3.7 ac/hr	4 h 36 min
KRTV #03	7 h 1 min	25.2 ac	3.6 ac/hr	3 h 44 min
KRTV #02	1 h 14 min	1.7 ac	1.4 ac/hr	0 h 29 min
KRTV #05	0 h 0 min	0 ac	0.0 ac/hr	4 h 45 min
OXBO 6230	11 h 7 min	33.5 ac	3.0 ac/hr	3 h 9 min
OXBO 6220	12 h 55 min	30.9 ac	2.4 ac/hr	5 h 1 min
#01P	3 h 38 min	7.2 ac	2.0 ac/hr	1 h 34 min
#02P	2 h 23 min	4.6 ac	1.9 ac/hr	0 h 54 min
Pellenc XL60	0 h 0 min	0 ac	0.0 ac/hr	0 h 15 min
<b>Total</b>	<b>83 h 5 min</b>			<b>69 h 10 min</b>

## Contents

Field Alerts	1
Vehicle Usage Summary	2
Field Coverage Summary	3
Vehicle Efficiency Summary	4
Full Coverage	6
Field 1 Coverage	7
Field 2 Coverage	8
Field 3 Coverage	9
Field 5 Coverage	10
Field 8 Coverage	11
Field 9 Coverage	12
Field 10 Coverage	13
Flagger Loggers	14
	15

# Field Coverage Summary



Field	Vehicle	Vehicle Hours	Vehicle Acreage
<b>Field 1</b> 43 h 13 min / 117.7 ac	JD #13	10 h 28 min	32.0 ac
	JD #01	10 h 3 min	25.1 ac
	JD #03	6 h 53 min	21.9 ac
	JD #10	6 h 52 min	17.0 ac
	JD #31	6 h 18 min	11.9 ac
	KRTV #04	2 h 39 min	9.9 ac
<b>Field 2</b> 28 h 53 min / 70.1 ac	ATV #02	9 h 18 min	21.9 ac
	ATV #01	8 h 49 min	21.4 ac
	JD #03	7 h 43 min	17.9 ac
	ATV #05	3 h 3 min	8.9 ac
<b>Field 3</b> 15 h 14 min / 45.8 ac	JD #30	11 h 27 min	35.5 ac
	JD #11	3 h 47 min	10.4 ac
<b>Field 5</b> 11 h 10 min / 23.6 ac	KRTV #02	4 h 14 min	9.0 ac
	KRTV #03	3 h 33 min	6.0 ac
	KRTV #01	3 h 23 min	8.6 ac
<b>Field 8</b> 10 h 49 min / 16.6 ac	JD #28	5 h 50 min	9.0 ac
	JD #29	4 h 59 min	7.6 ac
<b>Field 9</b> 5 h 38 min / 10.6 ac	KRTV #05	3 h 9 min	6.4 ac
	JD #28	2 h 29 min	4.3 ac
<b>Field 10</b> 1 h 4 min / 2.9 ac	JD #12	1 h 4 min	2.9 ac

## Contents

Field Alerts	1
Vehicle Usage Summary	2
Field Coverage Summary	3
Vehicle Efficiency Summary	4
Full Coverage	6
Field 1 Coverage	7
Field 2 Coverage	8
Field 3 Coverage	9
Field 5 Coverage	10
Field 8 Coverage	11
Field 9 Coverage	12
Field 10 Coverage	13
Flagger Loggers	14
	15

March 15 - March 21

## Field 2

● ATV #02	9 h 18 min	21.9 ac
● ATV #01	8 h 49 min	21.4 ac
● JD #03	7 h 43 min	17.9 ac
● ATV #05	3 h 3 min	8.9 ac

[View in Portal](#)

Field Alerts	1
Vehicle Usage Summary	2
Field Coverage Summary	3
Vehicle Efficiency Summary	4
Full Coverage	6
Field 1 Coverage	7
Field 2 Coverage	8
Field 3 Coverage	9
Field 5 Coverage	10
Field 8 Coverage	11
Field 9 Coverage	12
Field 10 Coverage	13
Flagger Loggers	15



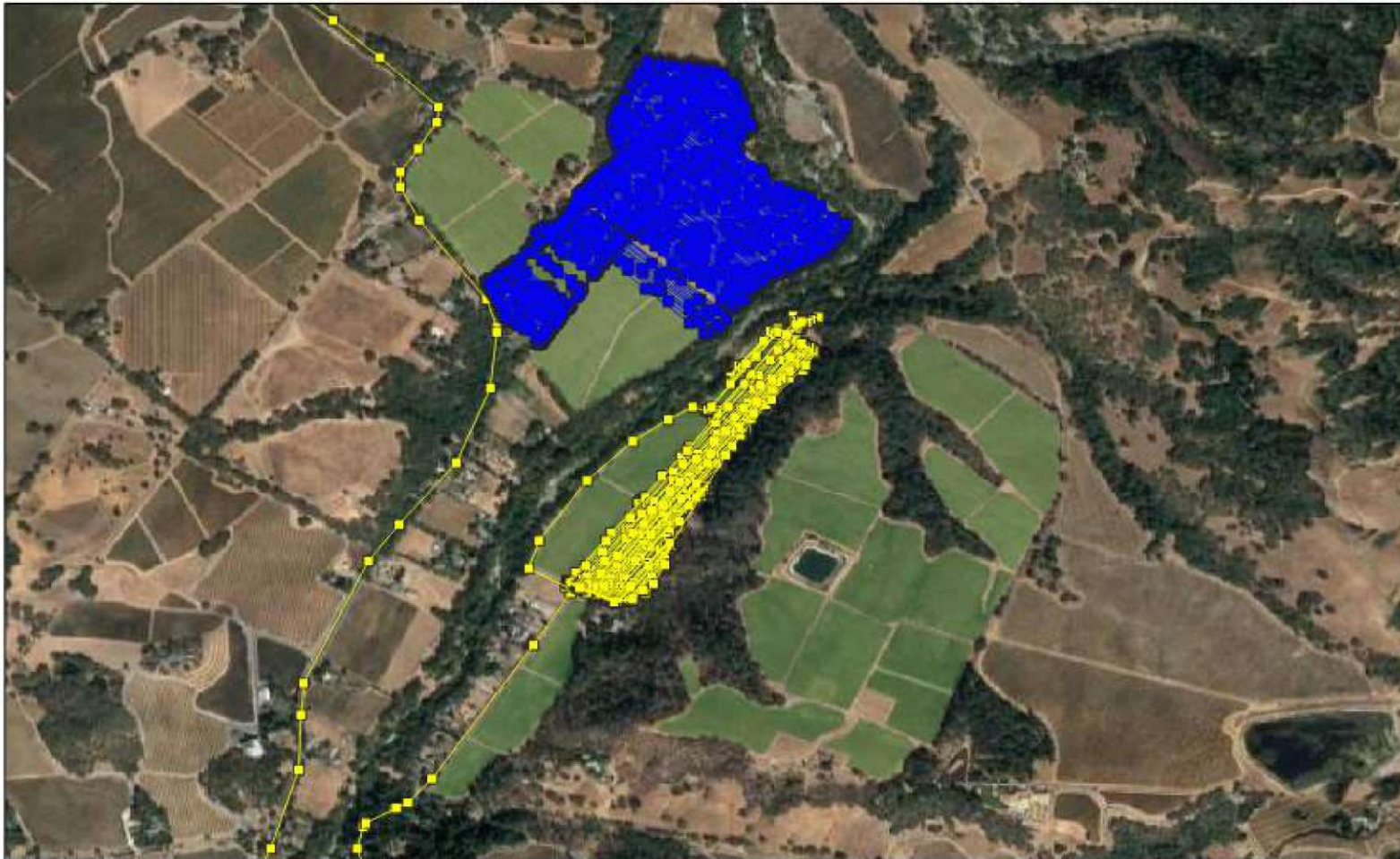
# March 15 - March 21

## Field 3

■ JD #30	11 h 27 min	35.5 ac
■ JD #11	3 h 47 min	10.4 ac

[View in Portal](#)

Field Alerts	1
Vehicle Usage Summary	2
Field Coverage Summary	3
Vehicle Efficiency Summary	4
Full Coverage	6
Field 1 Coverage	7
Field 2 Coverage	8
Field 3 Coverage	9
Field 5 Coverage	10
Field 8 Coverage	11
Field 9 Coverage	12
Field 10 Coverage	13
Flagger Loggers	15

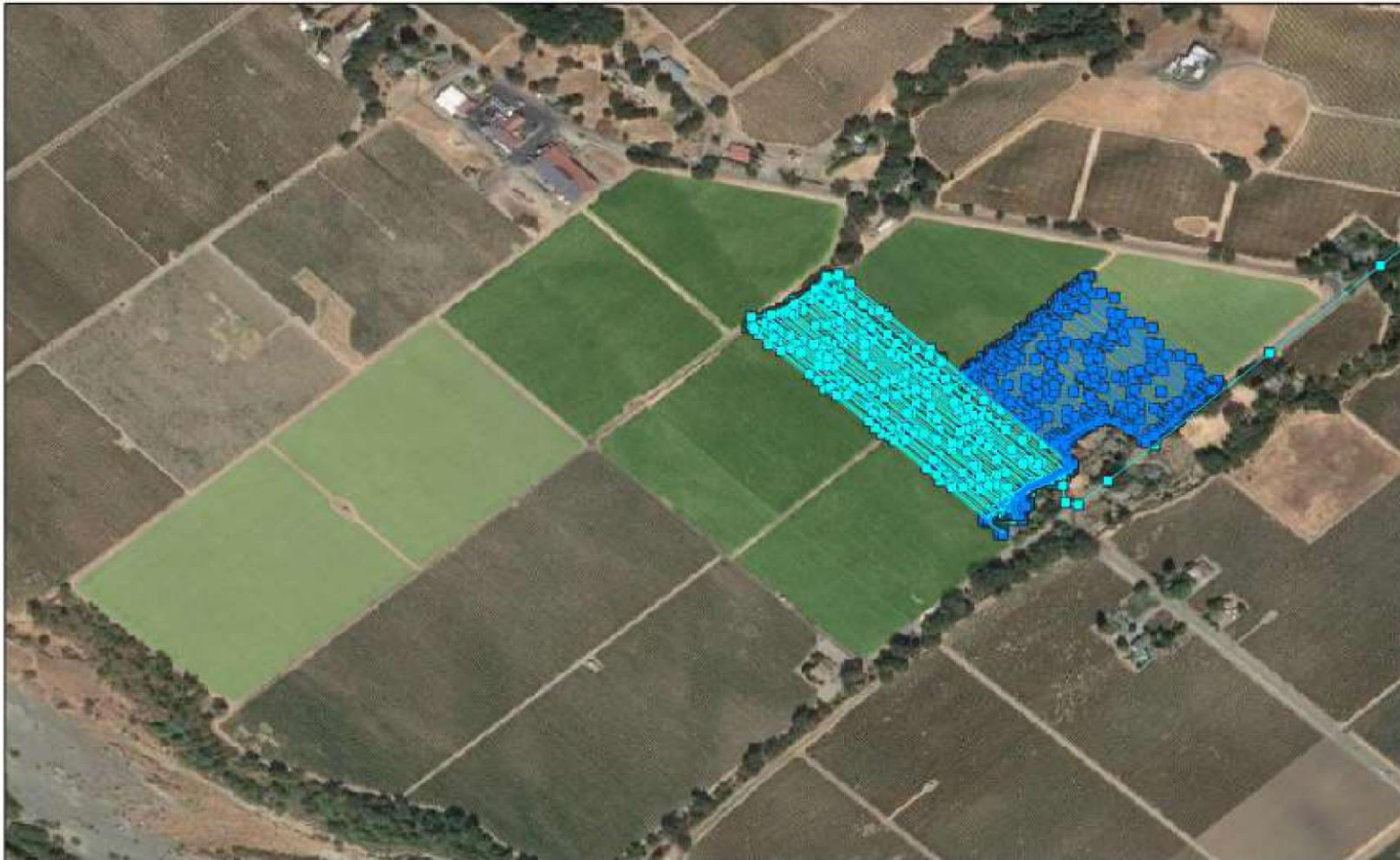


# March 15 - March 21

## Field 8

■ JD #28	5 h 50 min	9.0 ac
■ JD #29	4 h 59 min	7.6 ac

[View in Portal](#)



# Contents

Field Alerts	1
Vehicle Usage Summary	2
Field Coverage Summary	3
Vehicle Efficiency Summary	4
Full Coverage	6
Field 1 Coverage	7
Field 2 Coverage	8
Field 3 Coverage	9
Field 5 Coverage	10
Field 8 Coverage	11
Field 9 Coverage	12
Field 10 Coverage	13
Flagger Loggers	14
	15

# Flagged Loggers



Vehicle	Days Since Last Communicated	Date Last Communicated
JD #09	6	Mar 15, 2021

## Contents

Field Alerts	1
Vehicle Usage Summary	2
Field Coverage Summary	3
Vehicle Efficiency Summary	4
Full Coverage	6
Field 1 Coverage	7
Field 2 Coverage	8
Field 3 Coverage	9
Field 5 Coverage	10
Field 8 Coverage	11
Field 9 Coverage	12
Field 10 Coverage	13
Flagger Loggers	14
	15

**PLEASE CONTACT INTELICULTURE  
FOR A FULL SAMPLE REPORT**

**289-404-2653**

**[contact@intelliculture.ca](mailto:contact@intelliculture.ca)**